

What’s Accepted at the Curb

- Cardboard & Mixed Paper**
Clean pizza boxes, cereal boxes, mail, newspaper, magazines, office paper, and paperback books

Paper Cartons & Drink Boxes
Milk, juice, and soup boxes including Tetra Pak® cartons
- Glass Containers**
Clear, green, and brown food and beverage containers

Metal Cans & Foil
Aluminum foil and pie plates, food cans, and empty aerosol cans from food and cosmetic products

Plastics
Plastics marked #1, #2, #5 including yogurt cups, milk jugs, and detergent bottles

Additional Recyclables

- Accepted at Recycling and Solid Waste Center Drop-off Area:
- Batteries - NiCad, lead acid, lithium ion, rechargeable
 - Electronics
 - Fats, oils, grease (FOG) from cooking
 - Food scraps
 - Freon® and coolant units* (ex: air conditioners, dehumidifiers, refrigerators)
 - Rigid plastics**
 - Glass containers
 - Propane tanks
 - Scrap metal
 - Textiles & clothing (clean, dry and odorless)
 - Tires*
 - Yard waste*

* A solid waste permit and fee are required for these items. Items are subject to change without notice.
** See www.recycletopkins.org for a list of acceptable items

Food Scraps

Save money and reduce waste by recycling your food scraps free of charge at Drop Spots across Tompkins County.

- Drop Spots Include:**
- Brooktondale Community Center
 - Cayuga Compost
 - Cayuga Heights Village Office
 - Cornell Cooperative Extension
 - Danby Town Hall
 - Dryden Town Highway Dept.
 - East Hill Farmers Market
 - East Hill Plaza
 - Enfield Town Clerk
 - Groton Town Clerk’s Office
 - Hancock & 5th Street, Ithaca
 - Lansing Village Office
 - Newfield Town Hall
 - Recycling and Solid Waste Center
 - Tompkins County Highway Dept.
 - Trumansburg Farmers’ Market
 - Trumansburg Village Public Works

Visit www.recycletopkins.org/dropspots for hours.

NOT SURE WHETHER AN ITEM CAN BE RECYCLED?

Search for it using the “What Do I Do With...?” feature at www.recycletopkins.org

Curbside Recycling Guidelines for Tompkins County



 **RECYCLING AND MATERIALS MANAGEMENT**
OF TOMPKINS COUNTY

Curbside Pickup Schedule

Recycling collection is provided at the curb for County residents every other week. Refer to the table below to find your pick-up day. The calendar below shows green shaded and non-shaded weeks through June 2024.

Set out recycling by 6:00 am on your scheduled day unless otherwise noted. Late set-outs will not be collected until the next scheduled pick-up day. Visit www.recycletopkins.org to sign up for automatic reminders via phone, email, or text. Residents can also bring their recyclables to the Recycling and Solid Waste Center at no charge.




Non-Shaded Weeks

- CITY OF ITHACA**
Set out by 4:00 am.
Visit www.recycletopkins.org or call 273-6632 for pick-up day.
- TOWNS**
- | | |
|---------------------------------------|-----------|
| Caroline | Monday |
| Danby | Monday |
| <i>(excluding West Danby)</i> | |
| Dryden | Thursday |
| <i>North of and including Rte. 13</i> | |
| Groton | Wednesday |
| <i>West of Rte. 38</i> | |
| Ithaca | Friday |
| <i>West of Rte. 96B</i> | |
| Newfield | Tuesday |
| West Danby | Tuesday |
- VILLAGES**
- | | |
|-----------------------------|-----------|
| Cayuga Heights | Friday |
| <i>(set out by 7:30 am)</i> | |
| Dryden | Thursday |
| Freeville | Friday |
| Lansing | Wednesday |
| Trumansburg | Wednesday |

Shaded Weeks

- TOWNS**
- | | |
|--|-----------|
| Dryden | Thursday |
| <i>South of Route 13</i> | |
| Enfield | Friday |
| Groton | Wednesday |
| <i>East of and including Rout. 38</i> | |
| Ithaca | Tuesday |
| <i>East of and including Route 96B</i> | |
| Lansing | Monday |
| Ulysses | Friday |
- VILLAGES**
- | | |
|--------|-----------|
| Groton | Wednesday |
|--------|-----------|

 = **HOLIDAYS**
There is no recycling collection on these days. All pickups will be one day later for the rest of the holiday week.

Schedule subject to change. In the event of severe weather, collection may be delayed. For updated information visit www.recycletopkins.org.

2023

| July | | | | | | | August | | | | | | | September | | | | | | | October | | | | | | | November | | | | | | | December | | | | | | |
|------|----|----|----|----|----|----|--------|----|----|----|----|----|----|-----------|----|----|----|----|----|----|---------|----|----|----|----|----|----|----------|----|----|----|----|----|----|----------|----|----|----|----|----|----|
| S | M | T | W | Th | F | S | S | M | T | W | Th | F | S | S | M | T | W | Th | F | S | S | M | T | W | Th | F | S | S | M | T | W | Th | F | S | | | | | | | |
| | | | | | | 1 | | | 1 | 2 | 3 | 4 | 5 | | | | | | | 1 | 2 | 1 | 2 | 3 | 4 | 5 | 6 | 7 | | | | | 1 | 2 | | | | | | | |
| 2 | 3 | 4 | 5 | 6 | 7 | 8 | 6 | 7 | 8 | 9 | 10 | 11 | 12 | 3 | 4 | 5 | 6 | 7 | 8 | 9 | 8 | 9 | 10 | 11 | 12 | 13 | 14 | 5 | 6 | 7 | 8 | 9 | 10 | 11 | 3 | 4 | 5 | 6 | 7 | 8 | 9 |
| 9 | 10 | 11 | 12 | 13 | 14 | 15 | 13 | 14 | 15 | 16 | 17 | 18 | 19 | 10 | 11 | 12 | 13 | 14 | 15 | 16 | 15 | 16 | 17 | 18 | 19 | 20 | 21 | 12 | 13 | 14 | 15 | 16 | 17 | 18 | 10 | 11 | 12 | 13 | 14 | 15 | 16 |
| 16 | 17 | 18 | 19 | 20 | 21 | 22 | 20 | 21 | 22 | 23 | 24 | 25 | 26 | 17 | 18 | 19 | 20 | 21 | 22 | 23 | 22 | 23 | 24 | 25 | 26 | 27 | 28 | 19 | 20 | 21 | 22 | 23 | 24 | 25 | 17 | 18 | 19 | 20 | 21 | 22 | 23 |
| 23 | 24 | 25 | 26 | 27 | 28 | 29 | 27 | 28 | 29 | 30 | 31 | | | 24 | 25 | 26 | 27 | 28 | 29 | 30 | 29 | 30 | 31 | | | | 26 | 27 | 28 | 29 | 30 | | | 24 | 25 | 26 | 27 | 28 | 29 | 30 | |
| 30 | 31 | | | | | | | | | | | | | | | | | | | | | | | | | | | | | | | | | 31 | | | | | | | |

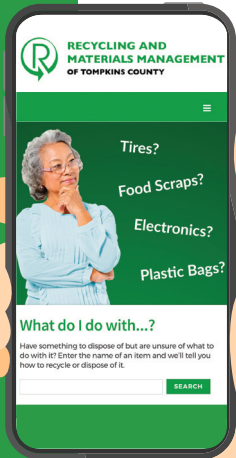
2024

| January | | | | | | | February | | | | | | | March | | | | | | | April | | | | | | | May | | | | | | | June | | | | | | |
|---------|----|----|----|----|----|----|----------|----|----|----|----|----|----|-------|----|----|----|----|----|----|-------|----|----|----|----|----|----|-----|----|----|----|----|----|----|------|----|----|----|----|----|----|
| S | M | T | W | Th | F | S | S | M | T | W | Th | F | S | S | M | T | W | Th | F | S | S | M | T | W | Th | F | S | S | M | T | W | Th | F | S | | | | | | | |
| | 1 | 2 | 3 | 4 | 5 | 6 | | | | | 1 | 2 | 3 | | | | | | 1 | 2 | | 1 | 2 | 3 | 4 | 5 | 6 | | | | | | 1 | | | | | | | | |
| 7 | 8 | 9 | 10 | 11 | 12 | 13 | 4 | 5 | 6 | 7 | 8 | 9 | 10 | 3 | 4 | 5 | 6 | 7 | 8 | 9 | 7 | 8 | 9 | 10 | 11 | 12 | 13 | 5 | 6 | 7 | 8 | 9 | 10 | 11 | 2 | 3 | 4 | 5 | 6 | 7 | 8 |
| 14 | 15 | 16 | 17 | 18 | 19 | 20 | 11 | 12 | 13 | 14 | 15 | 16 | 17 | 10 | 11 | 12 | 13 | 14 | 15 | 16 | 14 | 15 | 16 | 17 | 18 | 19 | 20 | 12 | 13 | 14 | 15 | 16 | 17 | 18 | 9 | 10 | 11 | 12 | 13 | 14 | 15 |
| 21 | 22 | 23 | 24 | 25 | 26 | 27 | 18 | 19 | 20 | 21 | 22 | 23 | 24 | 17 | 18 | 19 | 20 | 21 | 22 | 23 | 21 | 22 | 23 | 24 | 25 | 26 | 27 | 19 | 20 | 21 | 22 | 23 | 24 | 25 | 16 | 17 | 18 | 19 | 20 | 21 | 22 |
| 28 | 29 | 30 | 31 | | | | 25 | 26 | 27 | 28 | 29 | | | 24 | 25 | 26 | 27 | 28 | 29 | 30 | 28 | 29 | 30 | | | | | 26 | 27 | 28 | 29 | 30 | 31 | | 23 | 24 | 25 | 26 | 27 | 28 | 29 |
| | | | | | | | | | | | | | | 31 | | | | | | | | | | | | | | | | | | | | 30 | | | | | | | |

Single Stream Recycling

Before materials go in the bin:

- ✓ Empty all containers.
- ✓ Rinse containers of residue.
- ✓ Lids, labels, neck rings, and caps on containers are OK.
- ✓ Staples in office paper or envelopes are OK.
- ✓ Flatten all cardboard boxes.
- ✓ Items must be no smaller than 2 square inches and no larger than a 5 gallon pail.



What do I do with...?

Not sure what to do with an item? Search for it using the **What Do I Do With...?** tool at www.recycletompkins.org



Metal Cans & Foil

Aluminum foil and pie plates, food cans, and empty aerosol cans from food and cosmetic products



Cardboard & Mixed Paper

Clean pizza boxes, cereal boxes, newspaper, mail, magazines, office paper, and paperback books



Plastic Containers

Plastics marked #1, #2, #5 including yogurt cups, milk jugs, and detergent bottles



Paper Cartons & Drink Boxes

Milk, juice, and soup boxes including Tetra Pak® cartons



Glass Containers

Clear, green, and brown food and beverage containers

When in Doubt, Keep it Out

These Items Don't Belong in Your Recycling Bin



- BATTERIES
- COMPOSTABLE DISPOSABLES
- CONTAINERS FROM HAZARDOUS WASTE
- DRINKING GLASSES, PYREX®, OR COFFEE POTS
- ELECTRONICS/APPLIANCES

- HANGERS
- ICE CREAM CARTONS AND FROZEN FOOD PACKAGING
- PADDED ENVELOPES
- PAPER TOWELS, NAPKINS, CUPS & TISSUES
- PLASTICS #3, #4, #6, #7, OR UNMARKED

- PLASTIC BAGS OR FILM
- PVC PIPE
- RIGID PLASTICS
- STYROFOAM®
- SYRINGES
- TEXTILES/CLOTHING
- TRASH (I.E. FOOD, METAL, WOOD, DIAPERS)

Don't see an item above? Find the proper method at recycletompkins.org

SEARCH

Recycle Right in Tompkins County

Single Stream Recycling

Paper, glass, metal and plastic containers go in the same recycling bin.

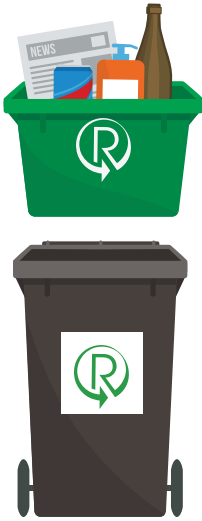
Recycling Bin Options:

1. County green recycling bin

- Bins (18 or 22 gallon size) can be purchased at the Tompkins County Recycling and Materials Management office.

2. Use a recycling container of your choice

- Size: Up to 50 gallons.
- Weight: Up to 40 pounds when full.
- Container may have wheels and a lid.
- Mark your container with an "R" decal. (Decals are available for free at the TCRMM Office, the Public Drop-Off Area of the Recycling and Solid Waste Center, all food scraps drop spots and municipal offices, as well as several other locations).

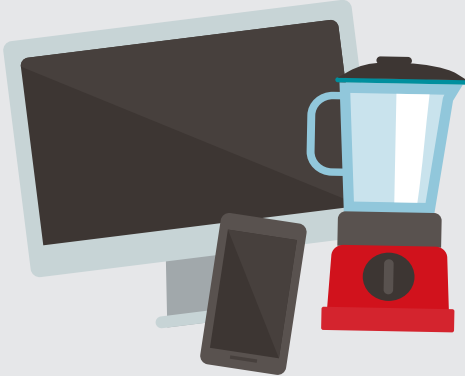


To prepare your recyclables:

- ✓ Empty all containers and rinse out residue.
- ✓ Place your recycling bin at the curb no later than **6:00 am** on your scheduled collection day (**4:00 am** in the City of Ithaca).
- ✓ Put "R" decals on both side of your recycling bin parallel to the road so the collector can see it.
- ✓ Flatten cardboard. If it does not fit in your recycling bin, place next to the bin in stacks no more than 4' x 4' x 4'.
- ✓ **DO NOT** put plastic bags in your recycling bin or leave items in a plastic bag for pick up. **They will not be collected.**

If your recycling is picked up on the same day as your trash, place your bin at least 2 feet from your trash so the collector can easily see your recycling bin.

Donate Working Items



Finger Lakes ReUse, Inc.

Accepting quality reusable building materials, furniture, housewares, electronics and more. Donations are tax deductible.

For a list of locations and hours of operation, visit www.ithacareuse.org or call (607) 257-9699

Household Hazardous Waste



Household Hazardous Waste (HHW) is material that must be handled and disposed of properly due to dangers it poses to our health and the environment.

Visit www.recycletompkins.org/hhw for drop-off event dates and to register in advance, or call the TCRMM office. A solid waste permit is required.

REJECTION

Recycling bins with **unacceptable items** will receive a red "Rejected" sticker and the contents of the bin **will not be collected**.

HAVE QUESTIONS?

www.recycletompkins.org • 607-273-6632

Tompkins County Recycling and Materials Management:
122 Commercial Avenue,
Ithaca, NY 14850
Monday-Friday 8:00am - 4:30pm

Recycling and Solid Waste Center:
160 Commercial Avenue,
Ithaca NY 14850
Monday-Saturday 7:00am - 3:30pm